

# HP OpenVMS

---

## ServiceControl GUI V2.2.1

### Release Notes

May 2015

**Revision/Update Information**  
**Software Version**  
**Operating System Version**

New manual.  
PERFDAT GUI V2.2.1  
Win2003 / 2008 / XP / Win 7



---

**May 2015**

© Hewlett-Packard Company, 2015. All rights reserved.

Hewlett-Packard Company makes no warranty of any kind with regard to this material, including, but not limited to, the implied warranties of merchantability and fitness for a particular purpose. Hewlett-Packard shall not be liable for errors contained herein or for incidental or consequential damages in connection with the furnishing, performance, or use of this material.

This document contains proprietary information, which is protected by copyright. No part of this document may be photocopied, reproduced, or translated into another language without the prior written consent of Hewlett-Packard. The information contained in this document is subject to change without notice.

HP, the HP logo and OpenVMS are trademarks of HP.

Microsoft, MS-DOS, Windows, and Windows NT are trademarks of Microsoft Corporation in the U.S. and/or other countries.

All other product names mentioned herein may be trademarks of their respective companies.

Confidential computer software. Valid license from HP required for possession, use or copying.

Hewlett-Packard Company shall not be liable for technical or editorial errors or omissions contained herein. The information is provided "as is" without warranty of any kind and is subject to change without notice. The warranties for Hewlett-Packard Company products are set forth in the express limited warranty statements accompanying such products. Nothing herein should be construed as constituting an additional warranty.

Customer may not modify or reverse engineer, remove, or transfer the software or make the software or any resultant diagnosis or system management data available to other parties without HP's or its authorized service provider's consent. Upon termination of the services, customer will, at HP's or its service provider's option, destroy or return the software and associated documentation in its possession.

Printed in Austria.

---

# Contents

Preface .....	4
OSC Mgmt GUI - Installation Release Notes .....	5
1.1 Installation .....	5
1.2 Supported Windows versions .....	5
1.3 HP OpenVMS ServiceControl advisory .....	5
OSC Mgmt GUI V2.2.1 – New Features .....	7
2.1 OSC transaction control .....	7
2.1.1 Starting the transaction monitor .....	7
2.1.2 Canceling a transaction .....	9

---

# Preface

## Audience

This manual is intended for all HP OpenVMS ServiceControl users who have installed the OSC Mgmt GUI. Read this manual before you install, upgrade or use version V2.2.1 of OSC Mgmt GUI.

## Document Structure

- Chapter 1 contains installation and support information
- Chapter 2 OSC Mgmt GUI V2.2.1 new features

---

## OSC Mgmt GUI - Installation Release Notes

This chapter contains information that you need to know before installing OSC Mgmt GUI V2.2.1.

### *1.1 Installation*

Extract the ZIP-File *OscMgGui221\_Setup.zip* into a temporary directory and double-click on the *OscMgGui221\_Setup.exe* image. SETUP guides you through the installation. You will be asked to define the installation directory. If you are upgrading to OSC Mgmt GUI V2.2.1 define the same directory as the previous GUI version was installed in. Otherwise all the existing configuration settings will be lost.

In case of problems installing OSC Mgmt GUI V2.2.1 please contact HP OpenVMS ServiceControl support:

[ServiceControl@hp.com](mailto:ServiceControl@hp.com)

### *1.2 Supported Windows versions*

OSC Mgmt GUI V2.2.1 supports the following Windows versions:

- Windows XP
- Windows 2003
- Windows 7
- Windows 2008

### *1.3 HP OpenVMS ServiceControl advisory*

If HP OpenVMS ServiceControl V3.4 is installed on an OSC cluster it is strongly recommended to use OSC Mgmt GUI V2.2.1 to connect to such an OSC cluster. Otherwise it can happen that the state information of the OSC entities (service groups, services and resources) will be incorrectly displayed in the GUI.

OSC Mgmt GUI V2.2.1 can interoperate with all HP OpenVMS ServiceControl V3.x releases.

## OSC Mgmt GUI V2.2.1 – New Features

This chapter contains information about the new features of OSC Mgmt GUI V2.2.1.

### 2.1 OSC transaction control

HP OpenVMS ServiceControl V3.4 and higher versions provide full user control of all OSC transactions currently in progress on an OSC cluster.

OSC Mgmt GUI V2.2.1 supports this feature. An OSC transaction monitor can be started from the GUI which provides full information about the ongoing transactions on the connected OSC cluster. In addition particular transactions can be canceled using the OSC transaction monitor.

#### 2.1.1 Starting the transaction monitor

To start the transaction monitor either click on *Show Transactions* of the *Cluster* menu or on the *Transactions* toolbar button a shown below.

To start the transaction monitor click on either of these buttons

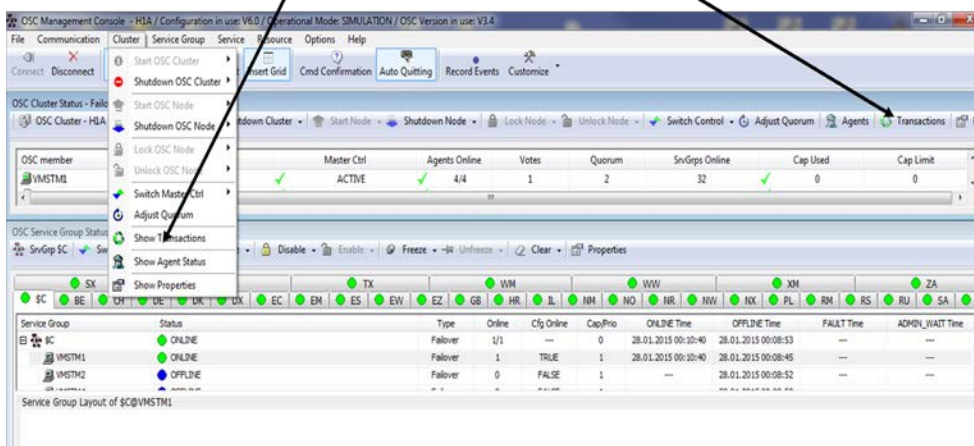


Fig 2.1 How to start the transaction monitor.

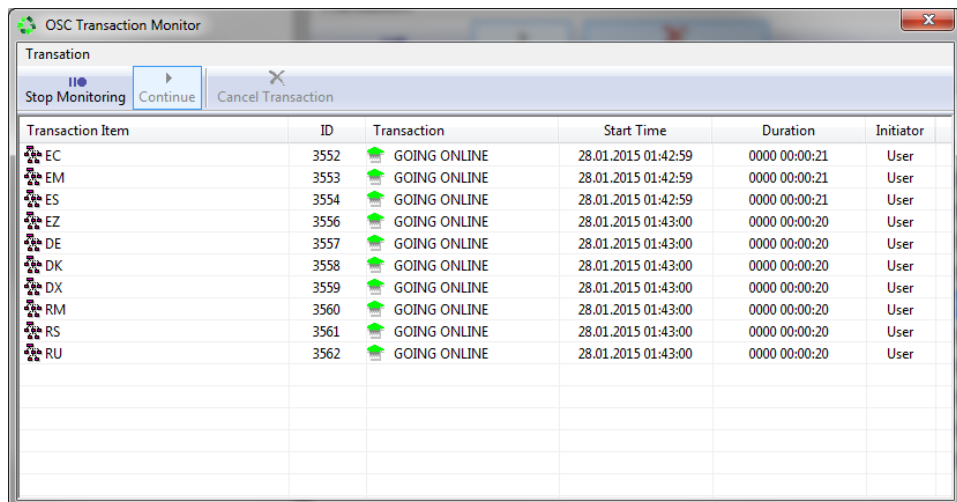
---

### Note

The transaction monitor cannot be started if the GUI is connected to an OSC cluster member running HP OpenVMS ServiceControl V3.3 or a lower version. In this case the *Transactions* toolbar button as well as the *Show Transaction* menu entry is disabled.

---

Once the transaction monitor is started the GUI requests the currently active transactions from the OSC cluster connected to and lists them in its list view as shown below.



The screenshot shows the 'OSC Transaction Monitor' window. It has a toolbar with 'Stop Monitoring', 'Continue', and 'Cancel Transaction' buttons. Below the toolbar is a table with the following data:

Transaction Item	ID	Transaction	Start Time	Duration	Initiator
EC	3552	GOING ONLINE	28.01.2015 01:42:59	0000 00:00:21	User
EM	3553	GOING ONLINE	28.01.2015 01:42:59	0000 00:00:21	User
ES	3554	GOING ONLINE	28.01.2015 01:42:59	0000 00:00:21	User
EZ	3556	GOING ONLINE	28.01.2015 01:43:00	0000 00:00:20	User
DE	3557	GOING ONLINE	28.01.2015 01:43:00	0000 00:00:20	User
DK	3558	GOING ONLINE	28.01.2015 01:43:00	0000 00:00:20	User
DX	3559	GOING ONLINE	28.01.2015 01:43:00	0000 00:00:20	User
RM	3560	GOING ONLINE	28.01.2015 01:43:00	0000 00:00:20	User
RS	3561	GOING ONLINE	28.01.2015 01:43:00	0000 00:00:20	User
RU	3562	GOING ONLINE	28.01.2015 01:43:00	0000 00:00:20	User

Fig 2.2 Transaction monitor

The transaction monitor periodically updates the transaction list view. The poll interval is 5 seconds.

---

### Note

Since the transaction monitor is polling for updates it is possible that a transaction is removed from the transaction list view up to 5 seconds later than the actual time the transaction completed.

---

The user can stop transaction monitoring without closing the transaction monitor window by clicking in the *Stop Monitoring* toolbar button. Transaction monitoring can be re-enabled at any time by clicking on the *Continue* toolbar button.



## 2.1.2 Canceling a transaction

To cancel an ongoing transaction listed in the transaction monitor list view just select one from the list and click on the *Cancel* toolbar button as shown below.

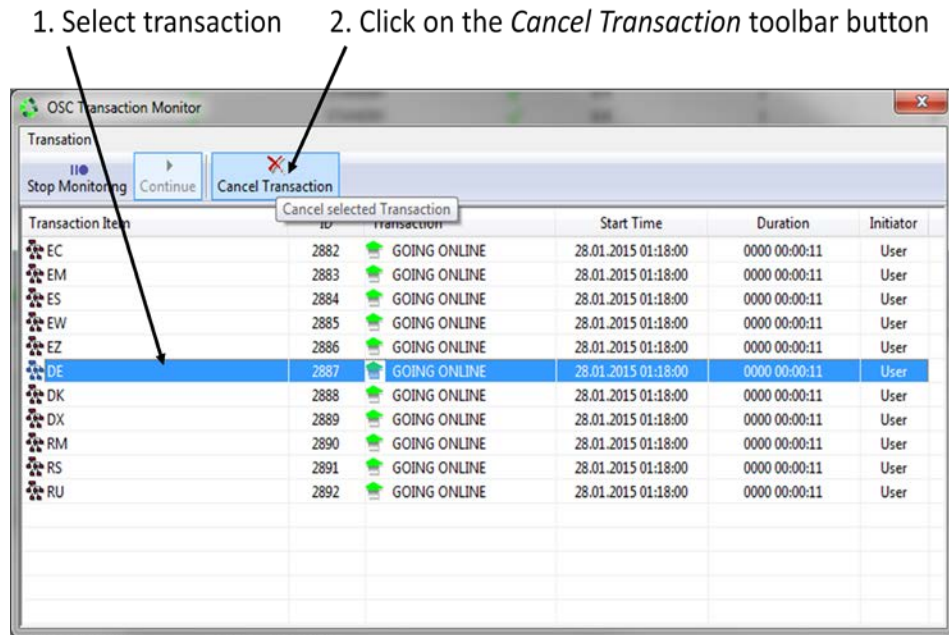


Fig 2.3 How to cancel an OSC transaction.

A canceled transaction is immediately removed from the transaction list.

### Note

Only privileged OSC users are authorized to cancel OSC transactions. Thus, if you are not logged as a privileged user any attempt to cancel an ongoing transaction will be rejected and a warning message box similar to the one shown below will pop-up signaling that you are not authorized to cancel transactions.

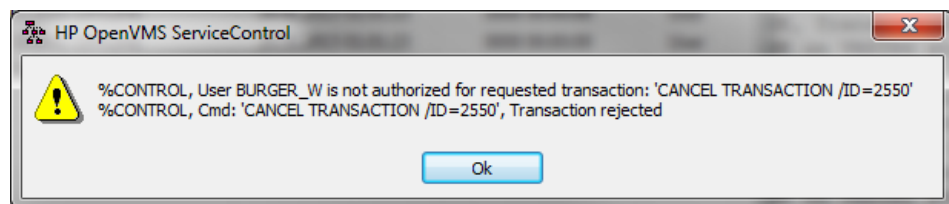


Fig 2.4 Warning pop-up message box if the user does not have the permission to cancel a transaction.